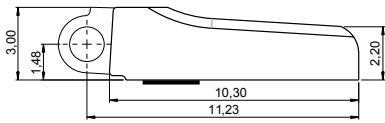


PATENTED

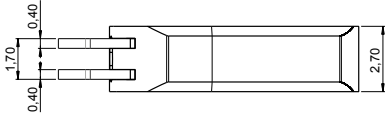
OCTOPUS 2.7 · 5 joints

High Performance Spring Hinges and Wirecores for Metal, Acetate and Combination Frames



BOX 03SC62023000

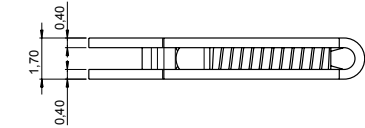
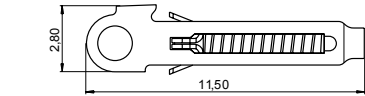
Material: **Nickel silver**
WITH SOLDERING PATCH



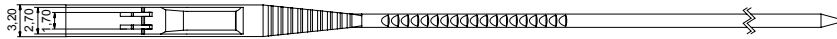
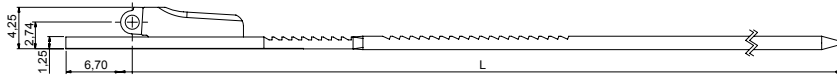
SOFT TROLLEY 07CR21602000

HARD TROLLEY 07CRB0251A1BYX

Material: **Stainless steel**



WIRECORES



WIRECORE

L 130	03WFC7796A130BNX
L 135	03WFC7796A235BNX

Material: **Nickel silver**
Trolley: **Soft Trolley**

Note: **Hard Trolley** available on request



BARRELING CAP 09CA62231000

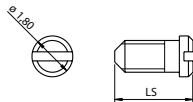
Material: **Plastic**

SCREWS

MINUS SCREW M1.40

LS 3.45 | 07V118034502

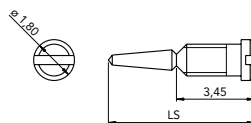
Material: **Stainless steel**



SELF ALIGNING SCREW M1.40

LS 6.45 | 07V118064500

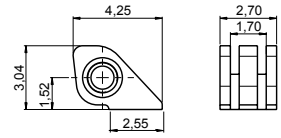
Material: **Stainless steel**



ON REQUEST

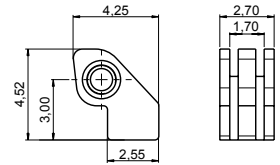
90° SOLDERING HINGE FOR COMBINATION FRAMES

Material: **Nickel silver**



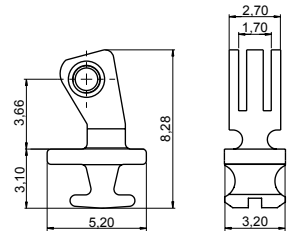
SOLDERING HINGE 03FR27220000

Material: **Nickel silver**



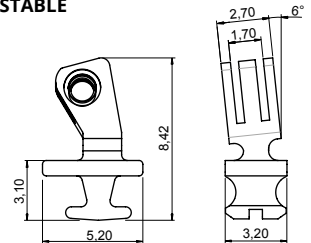
STEP HINGE 03FR27221000

Material: **Nickel silver**



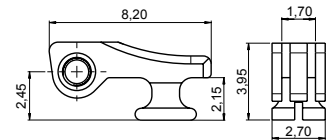
90° INSERT HINGE 03FRC5911A2BN0

Material: **Nickel silver**
ADJUSTABLE



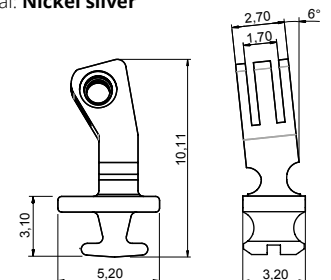
90° INSERT HINGE 03FRC5912A2BN0

Material: **Nickel silver**
ADJUSTABLE 6° SLANTED ANGLE



180° INSERT HINGE 03FR27223000

Material: **Nickel silver**



90° INSERT HINGE 03FRC5906A2BN0

Material: **Nickel silver**
HIGH VERSION ADJUSTABLE 6° SLANTED ANGLE

HINGES